

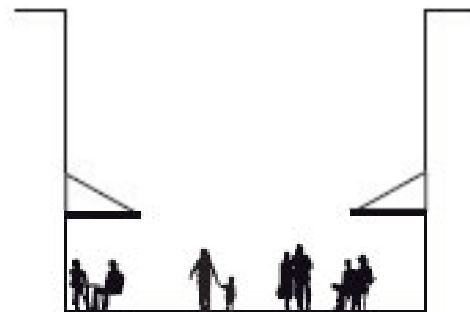
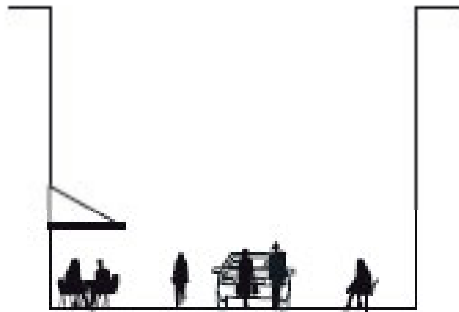
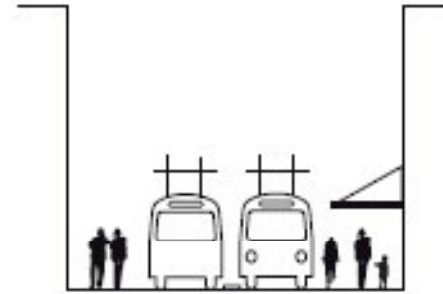
# Tipologias

Planificación urbana y arquitectura

Que es tipología?

Tipología es:

- Clasificación de formas edificadas, y espacios urbanos.



- Se los asocia por categorías:
  - **Forma del edificio** / objeto
  - Altura del objeto
  - **Densidad** de objetos por unidad de área
  - Grado de **similitud entre formas**
  - Lenguaje / estilo
  - **Patrones específicos** y muy jerárquicos

## BOULEVARD



24 metre wide footpaths are essential parts of Champs-Élysées, which have a strong green profile and a clear division between transport zones and zones for street furniture etc.  
*Champs Elysée, France*

## PUBLIC TRANSPORT STREET



A homogeneous paving unifies the street with the square and indicates a high level of shared space, where pedestrians are invited to cross at their convenience.  
*Strasbourg, France*

## PEDESTRIAN PRIORITY STREET



The one levelled pavement is divided into patterns defining the different zones for movement and for recreational purposes.  
*Strædet, Copenhagen, Denmark*

## PEDESTRIAN STREET



Pedestrian streets are distinct gathering points for a number of people, both locals and visitors.  
*Strædet, Copenhagen, Denmark*



Wide footpaths and distinct street trees frame the pedestrian space. A green median provides a safe retreat.  
*Copenhagen, Denmark*



Grass defines the zoning of the street in a public transport part and a pedestrian part.  
*Barcelona, Spain*



Shared surface with attractive paving and public benches.  
*New Road, Brighton, England*



Wall to wall paving defines the streetscape and sends a strong signal of pedestrianisation. Here kids can run freely to play and a multitude of activities can take place.  
*Bilbao, Spain*



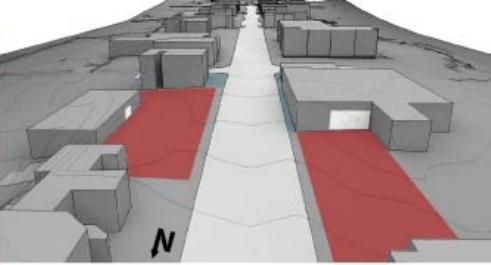
### 2.6.2. SUMMARY OF SIGN TYPES

# Morfología

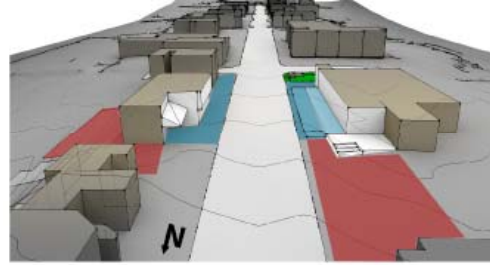
- Es la **estructura espacial** y **carácter** de **áreas metropolitanas**, ciudades, etc.
- Se encarga de **clasificar** (tipológicamente) los **patrones de poblamiento** o desarrollo en el espacio.
- Define y clasifica (tipológicamente) usos de suelo, propiedad, ocupación, etc.



Vine St. @ Post Office;

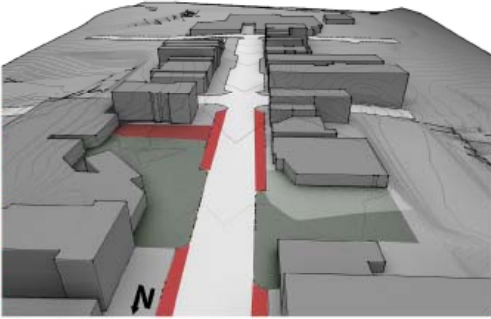


Parking proceeds entry  
**Poor visual** accessibility - limited street presence  
Navigating parking zones **discourages pedestrian** traffic

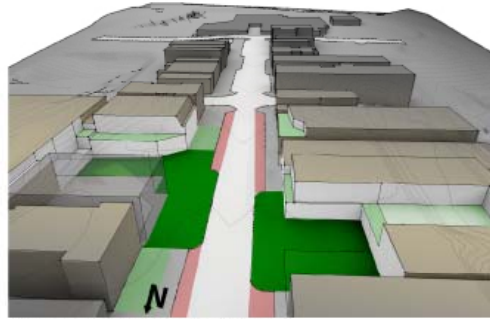


Building returns to sidewalk -  
parking pressed to secondary area  
**Greatly improved visual** accessibility -  
open storefronts inform passersby as to function and content  
Parking still accessible yet removed from primary access

Vine St. @ Kinkos Plaza;

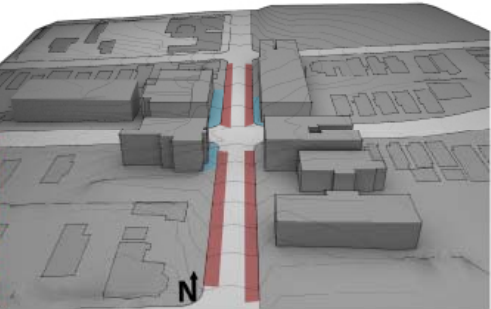


**Uncontrolled exterior** zones  
**'Holes'** in NBD density (low-slung buildings, awkward aesthetic fit)  
Clutter along sidewalk, combined with spatial dominance of  
diagonal parking, poses **frustrating pedestrian terrain**

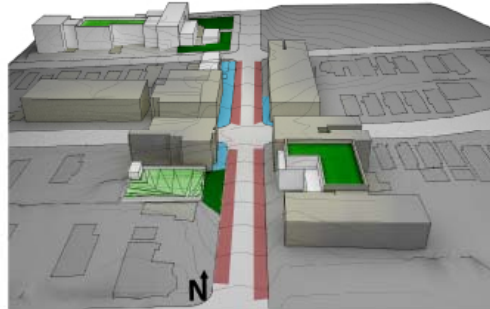


**Increased density and occupation**  
multiple layers/levels of street increase interaction; mix of affordable lofts and  
commercial/office/retail  
**Buildings brought to sidewalk**  
widened sidewalks are turned over to shops as ancillary eating/shopping spaces  
additional 'ownership' of sidewalks increases 'eyes' on the street  
**Parallel parking provides amenities**  
increased width of sidewalk promotes walking, provides additional  
space for bike lanes in street, possibility to bury utility lines, and also reduced  
speed of traffic

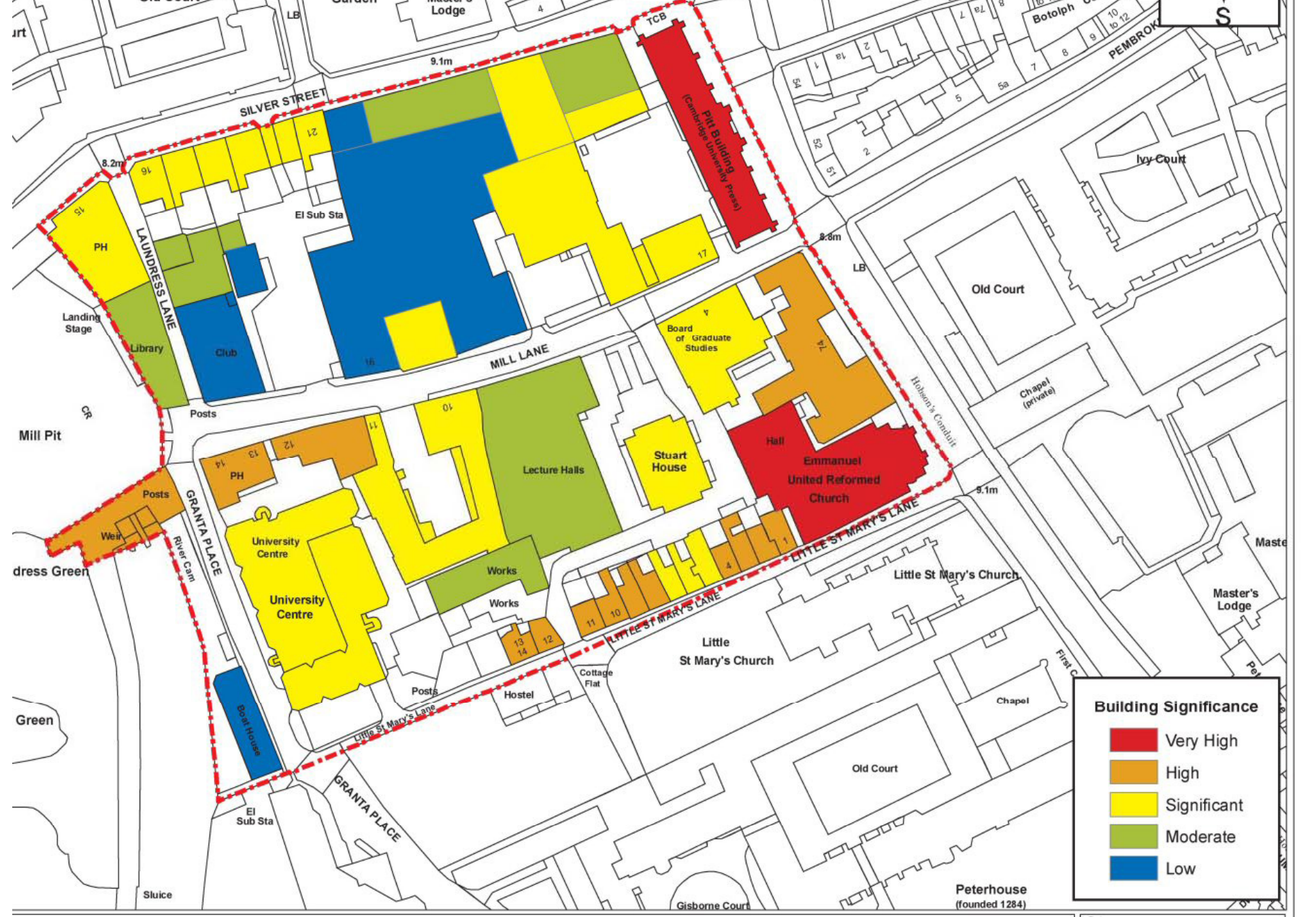
Highland @ University;



Limited commerce  
**Lacking public green** space  
**Opportunity** for a set of shops serving local residents,  
as well as hospital traffic, at a small more privatized scale



**Pocket commerce** zone provides for immediate community  
**Increased green** space  
public garden with adjacencies to both homes and eating venues  
**Addition of workforce/senior housing**  
Placement in quiet area, yet in proximity to area resources, venues, etc; residents have  
both inward and outward facing zones (at-grade- and roof-gardens for user options)



**Building Significance**

- Very High
- High
- Significant
- Moderate
- Low

Peterhouse  
(founded 1284)

S

Mill Pit

dress Green

Green

Sluice

SILVER STREET

LAUNDRES LANE

MILL LANE

GRANTA PLACE

GRANTA PLACE

LITTLE ST MARY'S LANE

LITTLE ST MARY'S LANE

LITTLE ST MARY'S LANE

Hobson's Conduit

PEMBROK

TCB

Pit Building (Pase)  
(Cambridge University Press)

Board of Graduate Studies

Stuart House

Hall  
Emmanuel United Reformed Church

University Centre

Lecture Halls

Works

Works

Hostel

Cottage Flat

Little St Mary's Church

Little St Mary's Church

Chapel

Old Court

Old Court

Chapel (private)

Ivy Court

Master's Lodge

Gisborne Court

El Sub Sta

Posts

Posts

Posts

El Sub Sta

CR

LB

irt

LB

Lodge

4

59

18

2

7

7

8

8

9

10

10

7

59

5

2

59

59

59

59

59

59

59

59

59

59

59

59

59

59

59

59

59

59

59

59

59

59

59

59

59

59

59

59

59

59

59

59

59

59

59

59

59

59

59

59

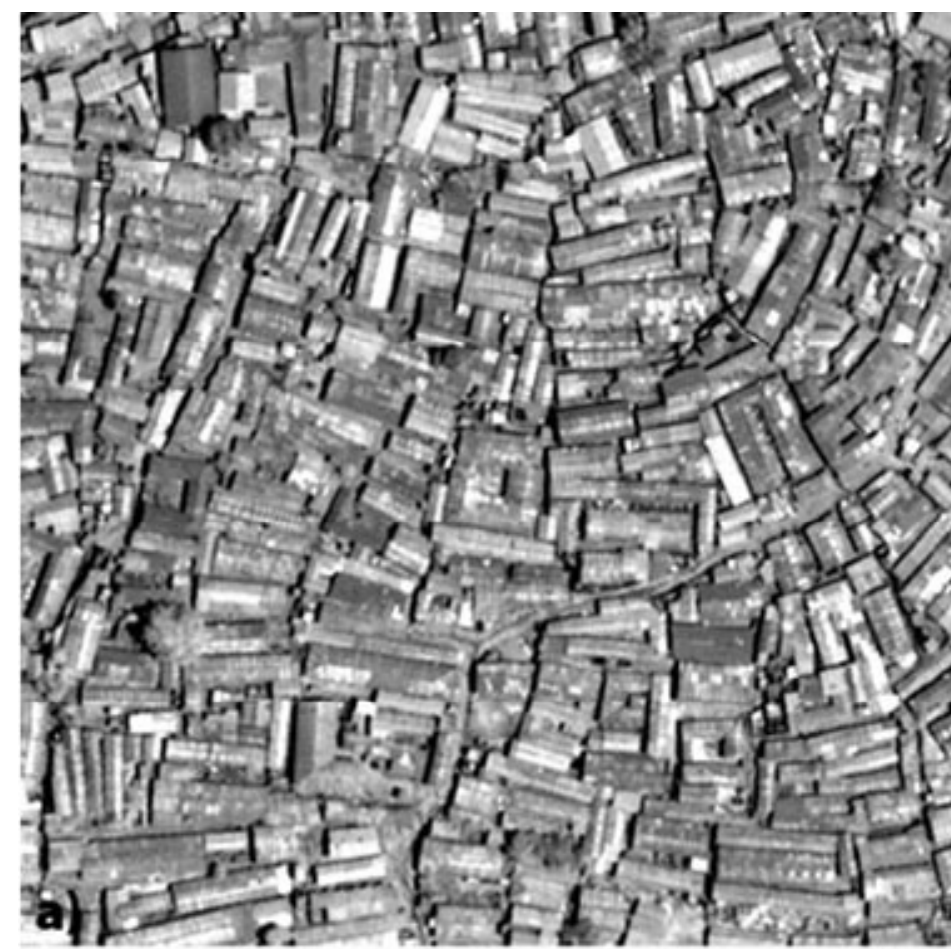
59

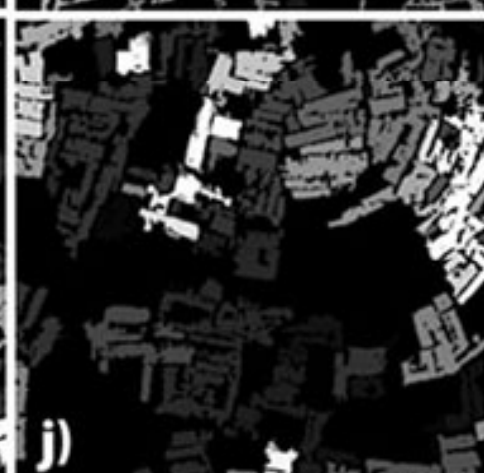
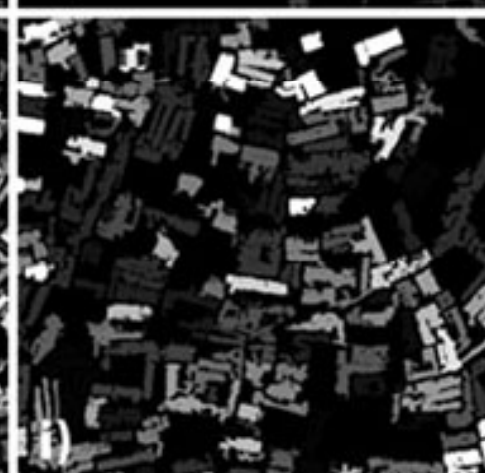
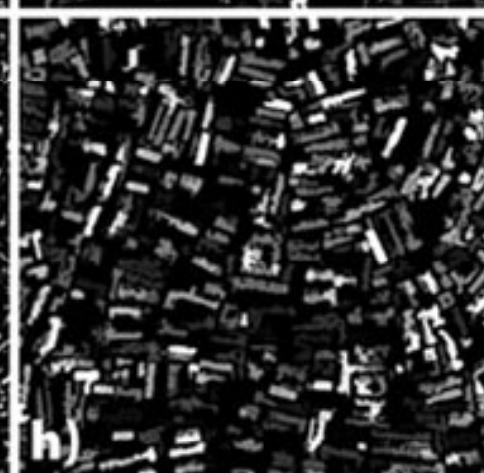
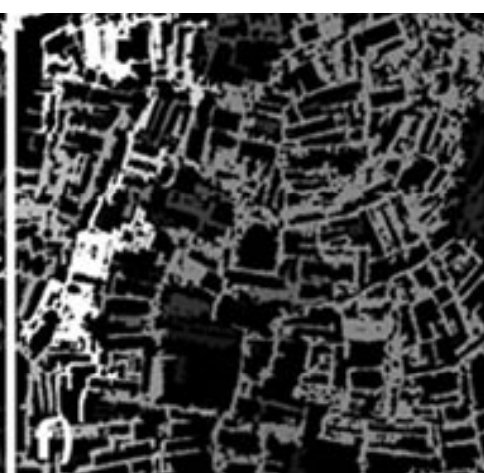
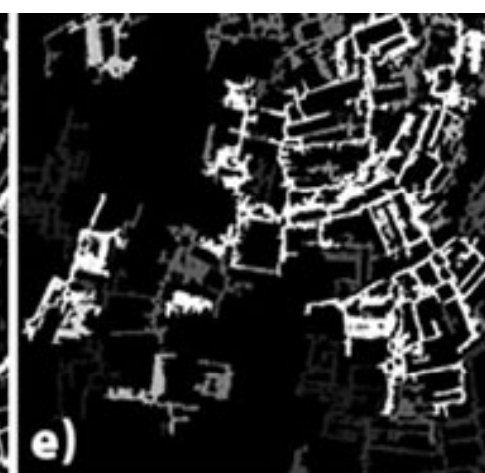
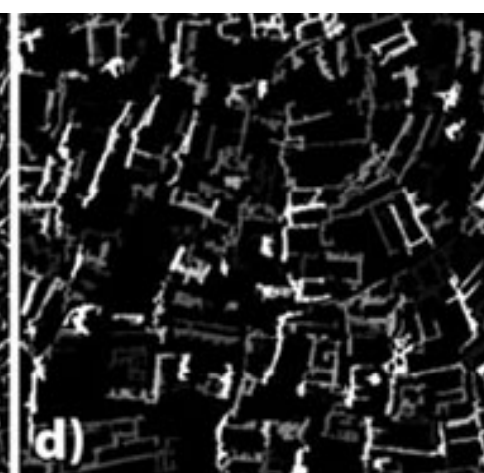
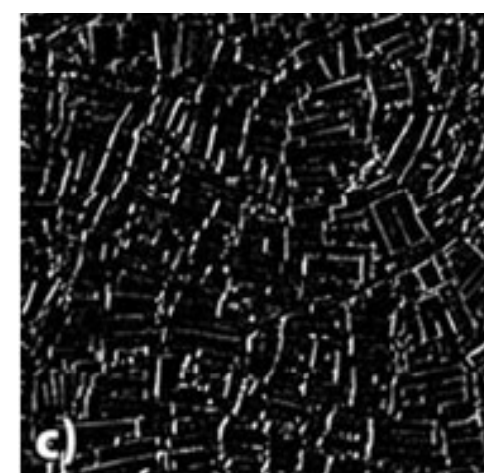
59

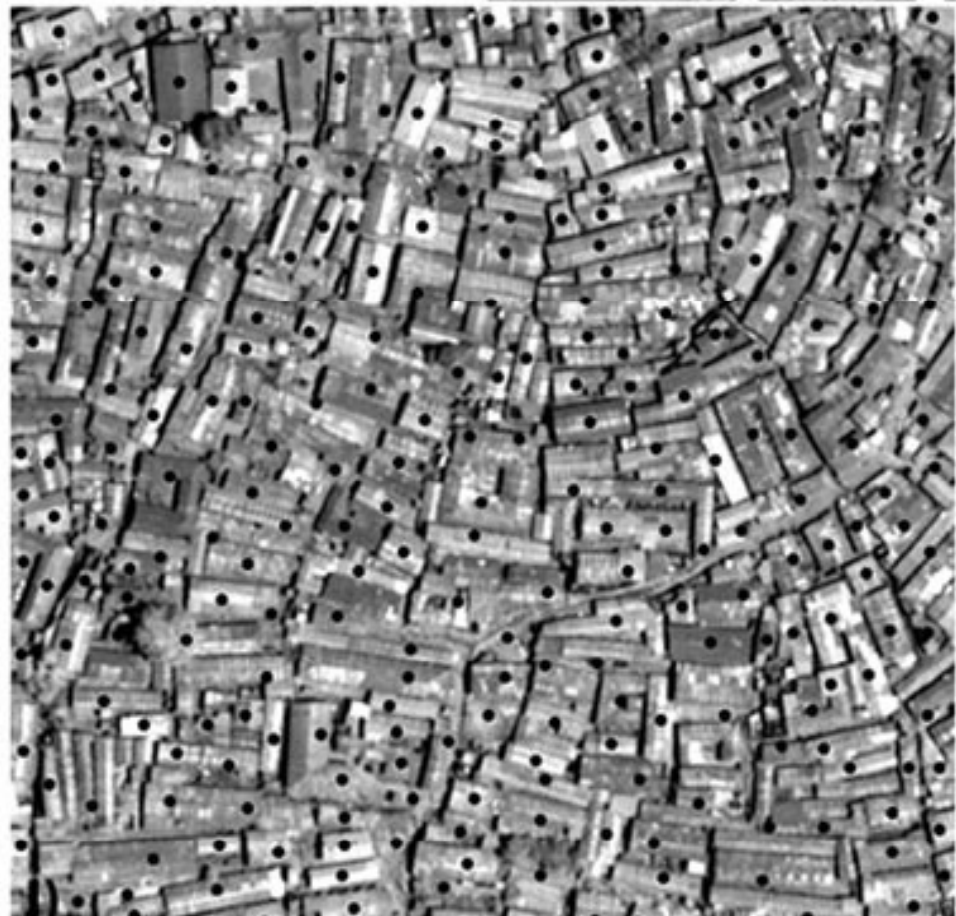
59

# Morfología

- Se enfoca típicamente en:
  - Malla **vial**
  - **Lote** o unidad de terreno limitada
  - Y la **forma de ocupación** del objeto arquitectónico en ese lote (pixel o unidad de análisis urbano)

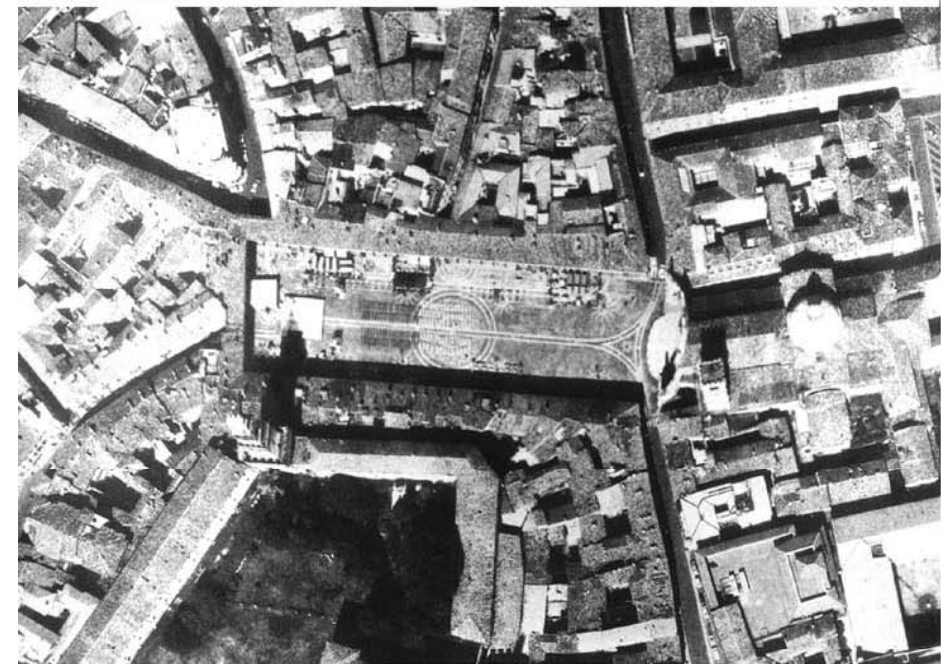
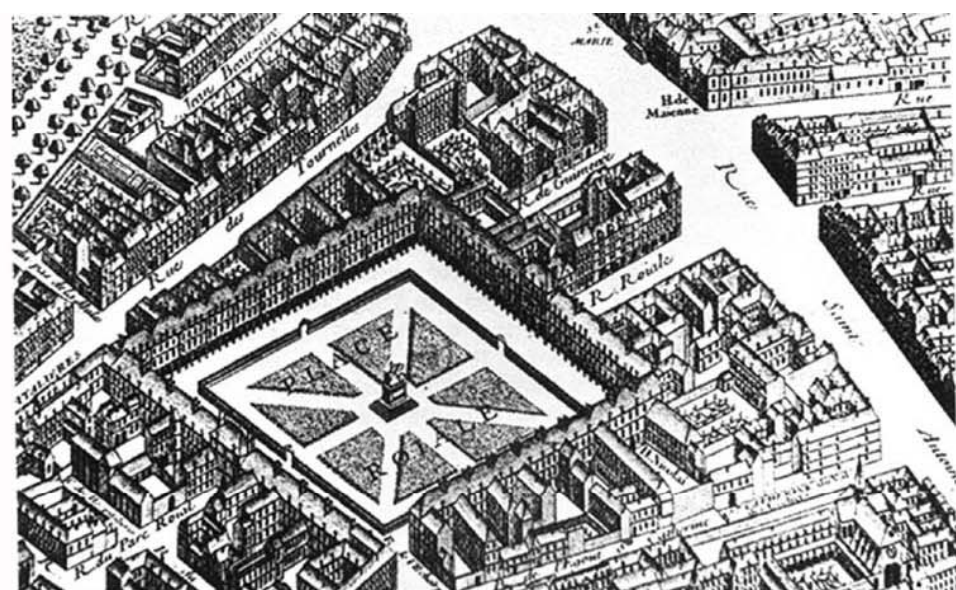






# Morfología

- **Se basa en la historia** (estructura urbana es producto de las **capas superpuestas** en el tiempo)
- Se analiza en **cartografía, y planos**
- Articulado la **lógica del tiempo y el espacio** se puede entender el patrón de crecimiento, la lógica detrás de la materia urbana estudiada.





 **APs within 100m**

**Downtown buildings**

43

1

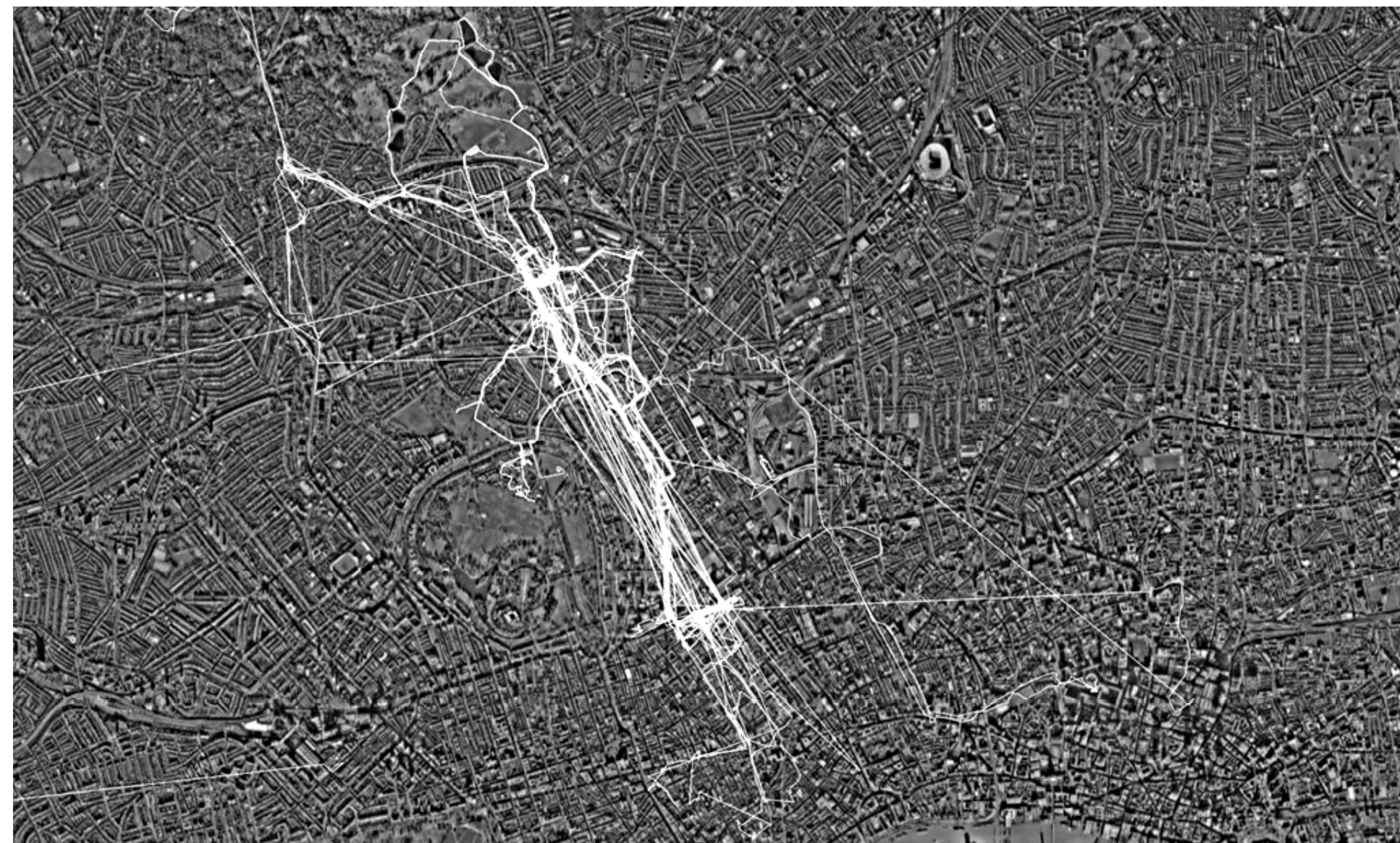
A vertical color gradient bar ranging from dark red at the bottom to light pink at the top, representing the density of APs within 100m.

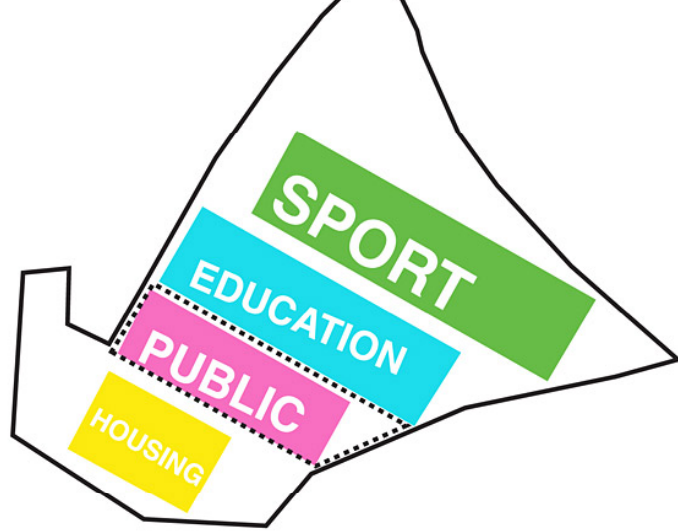
# Morfología

- No Estudia Objetos!, sino

las **RELACIONES**

**ENTRE ELLOS**

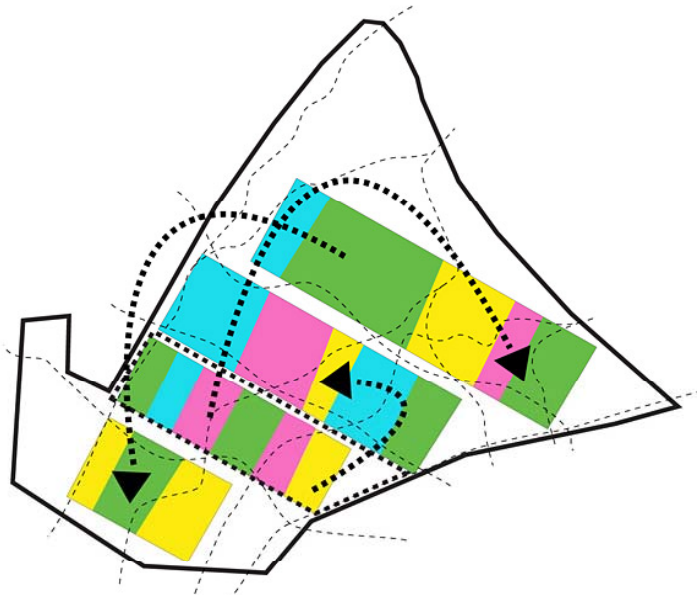




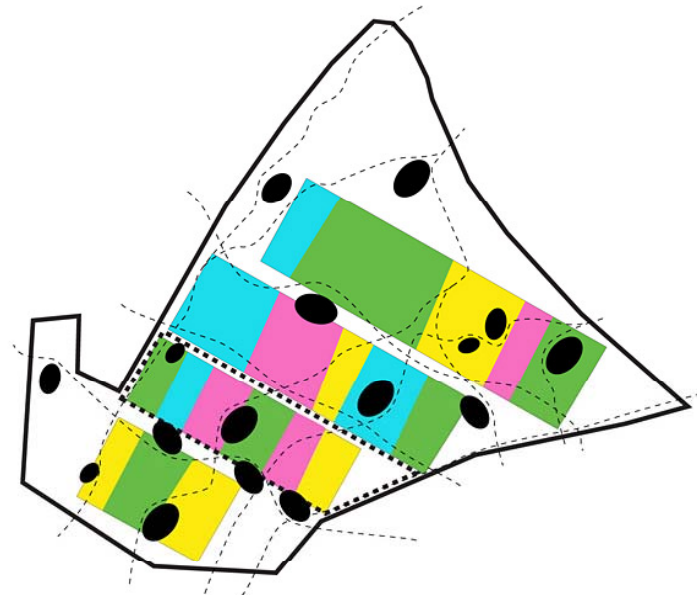
STRIPS



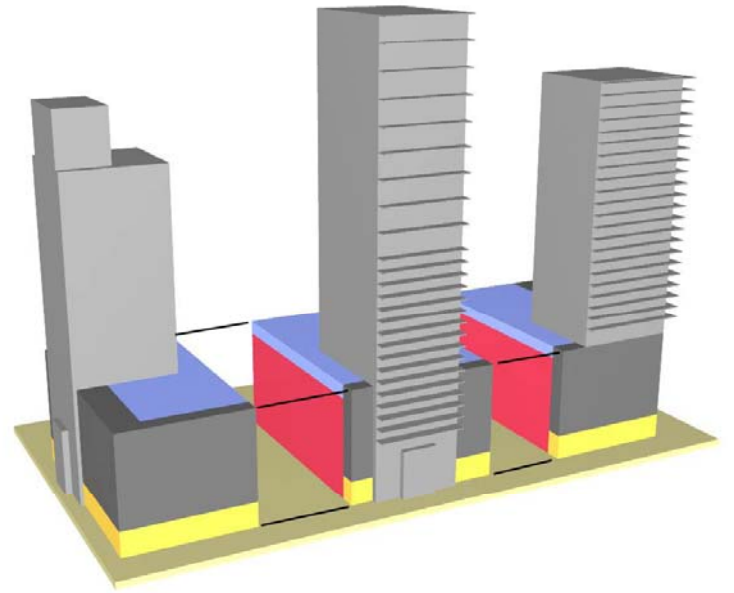
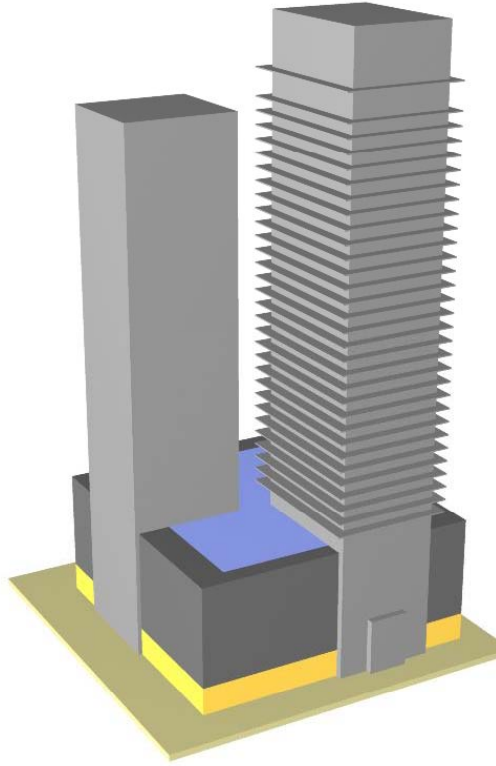
WEAVE

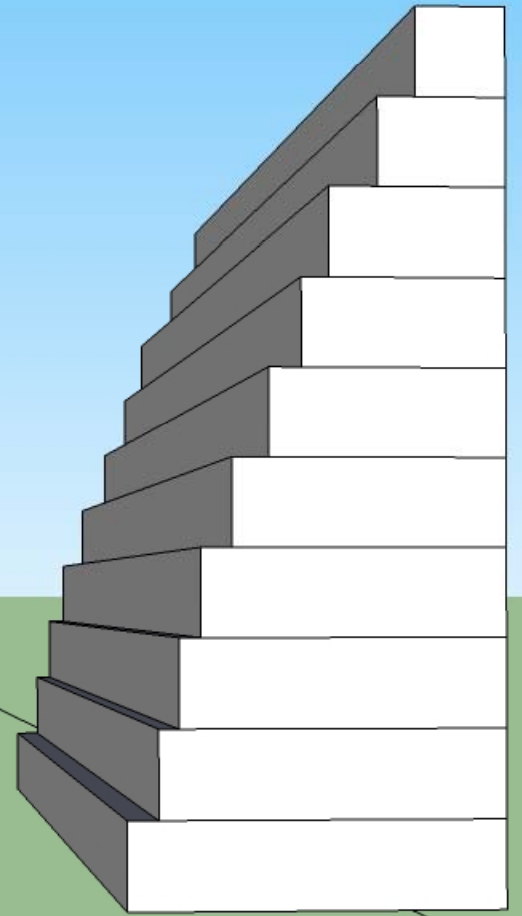
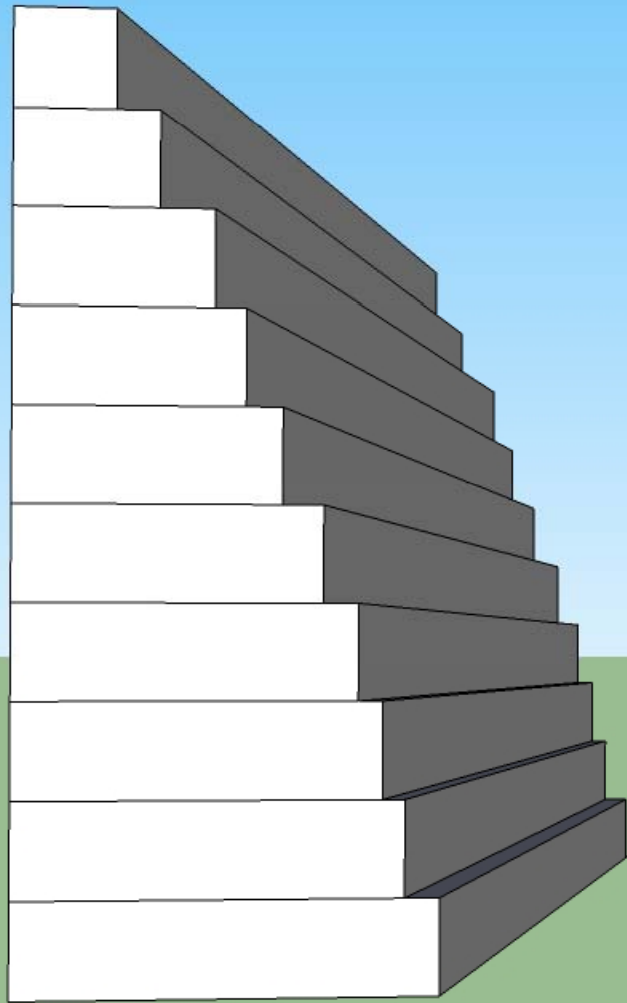


SHUFFLE + FLIP



INTENSIFY











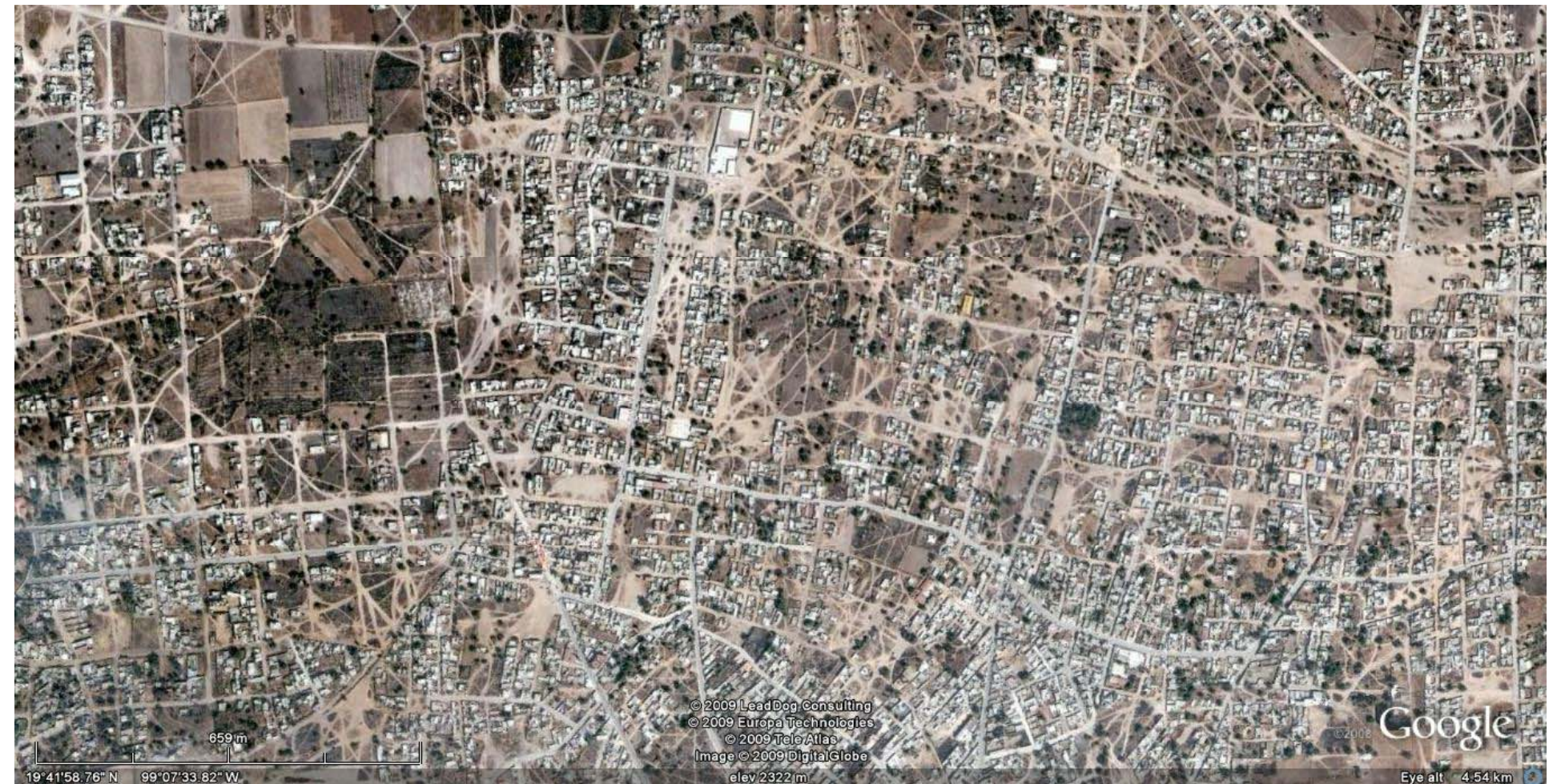
# Morfología

- **Relación de los componentes de la ciudad.**
- Similar a la morfología lingüística
  - **Vocabulario (componentes)**
  - **Sintaxis (relación entre componentes)**
- Es el análisis que estudia **la lógica interna de la ciudad**



# Morfología

- Sintaxis del espacio
- Figura y soporte urbano (masa vs vacío)
- Teoría de lugar



659 m  
19°41'58.76" N 99°07'33.82" W

© 2009 LeadDog Consulting  
© 2009 Europa Technologies  
© 2009 Tele Atlas  
Image © 2009 DigitalGlobe  
elev 2322 m

© 2008 Google

Eye alt 4.54 km

# Conclusiones

- **Estudiar** por medio de tipos (**tipológicamente**) los **elementos urbanos**
- Relacionarlos **funcional y espacialmente** (**morfología de la ciudad**)
- Comprender sus relaciones
- **Crear nuevos tipos o modificar los existentes**
- **Relacionar y crear nuevas funciones y organizaciones en la ciudad**

- Manos a la obra!