



Restaurant

Ideas, principios y manías

Principios

- **Estar** (de ubicarse en un lugar)
- **Quietud** (de imagen mental de tranquilidad)
- **Claridad** (luz)
- **Confort** (ergonometría adecuada)
- **Diferenciación espacial** (donde se come y otras actividades)
- **Intimidad / publico** (cerrado, abierto)

Referentes

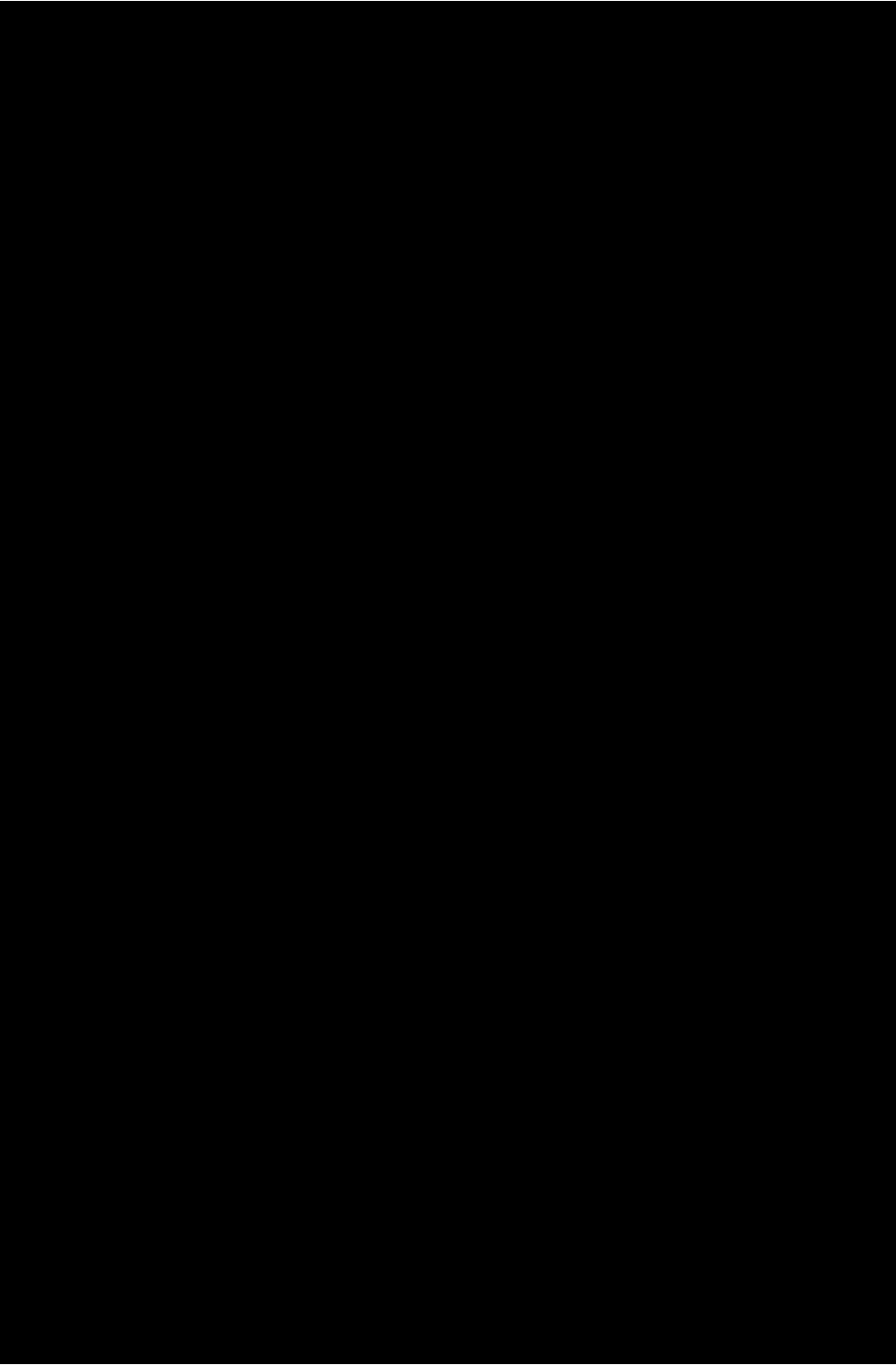
Estar















Referentes

Quietud















Referentes

Claridad













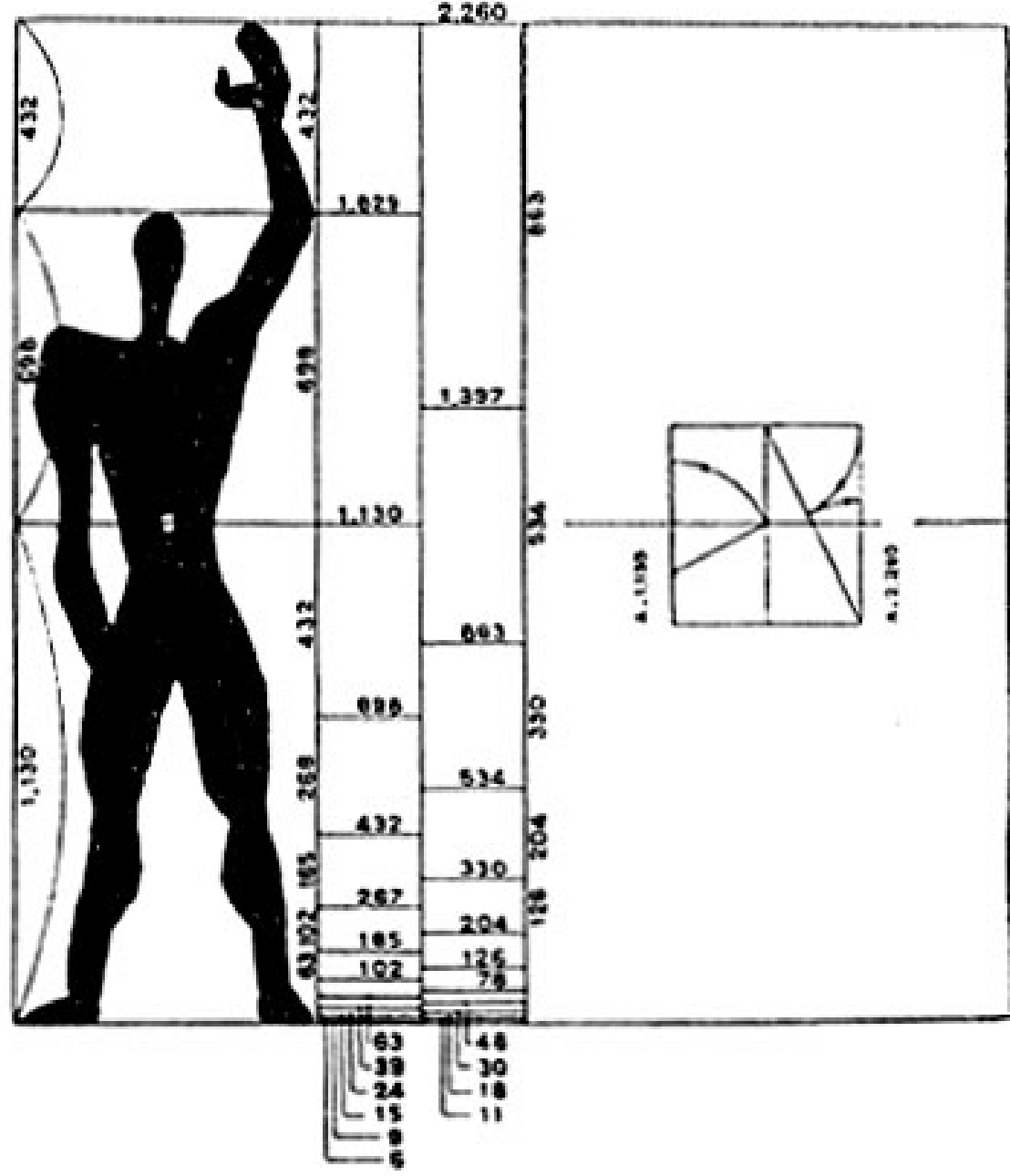


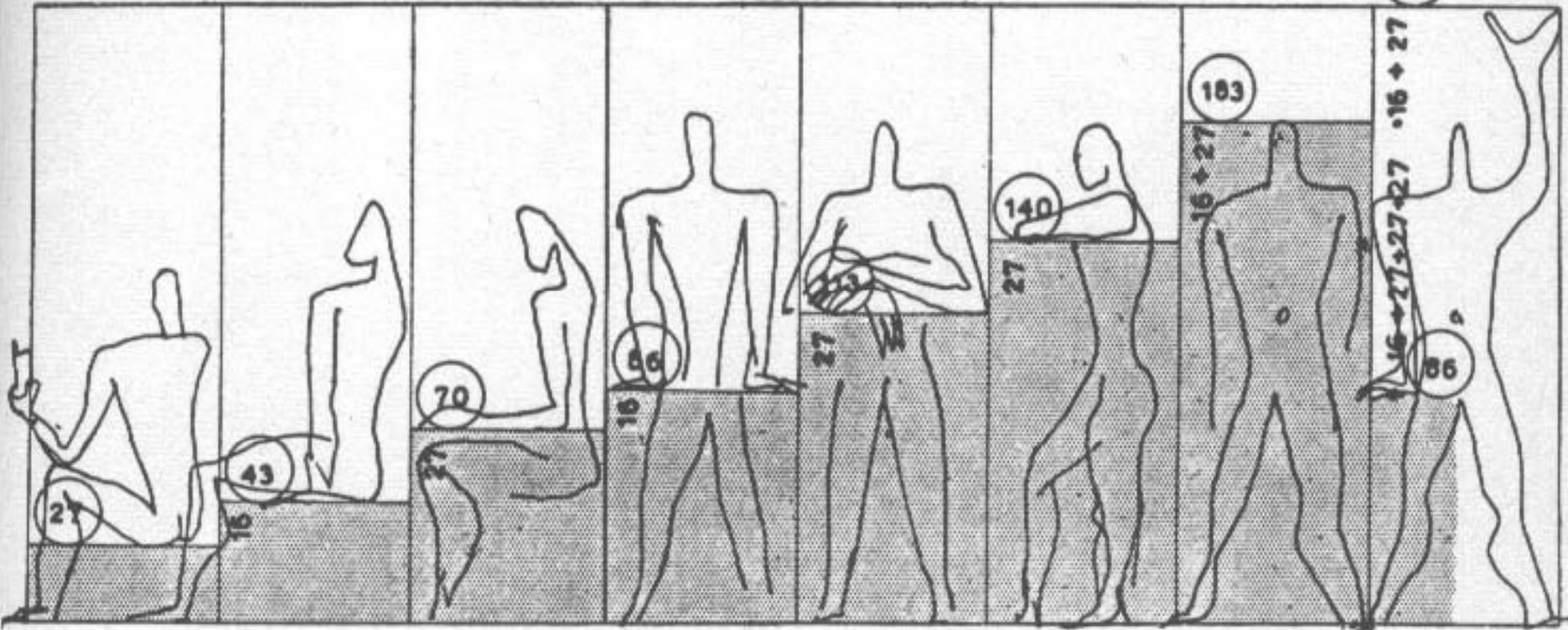




Referentes

Confort





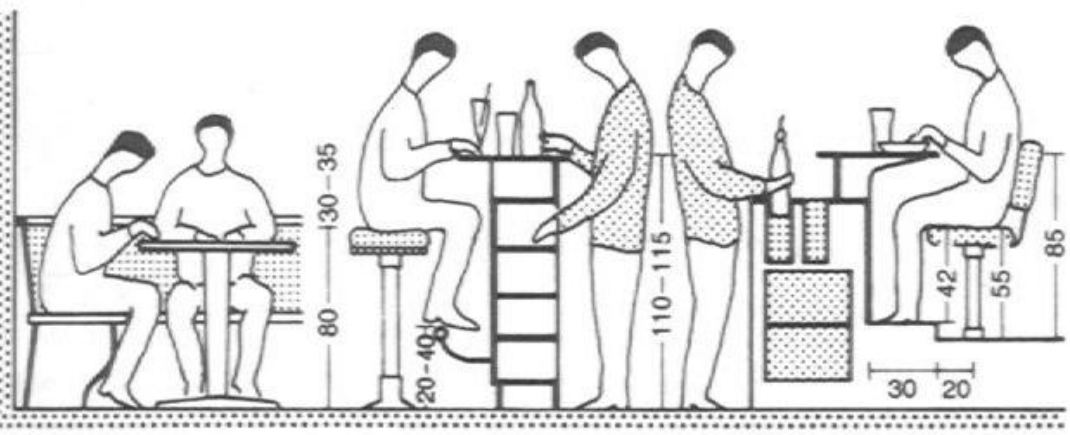
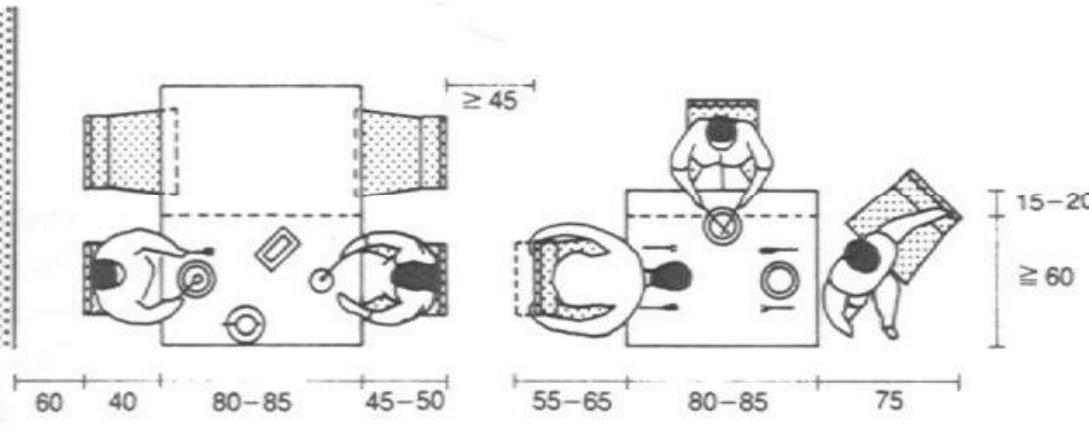
- 42 carpet tiles (18" x 18")
- 30 1" trace tubes
- 17 2" plotter paper tubes
- 9 3" plotter paper tubes
- 2 6" plotter paper tubes
- 28 1/4" ferrules
- 28 steel washers
- 4 7 foot long 3/16" coated steel cables

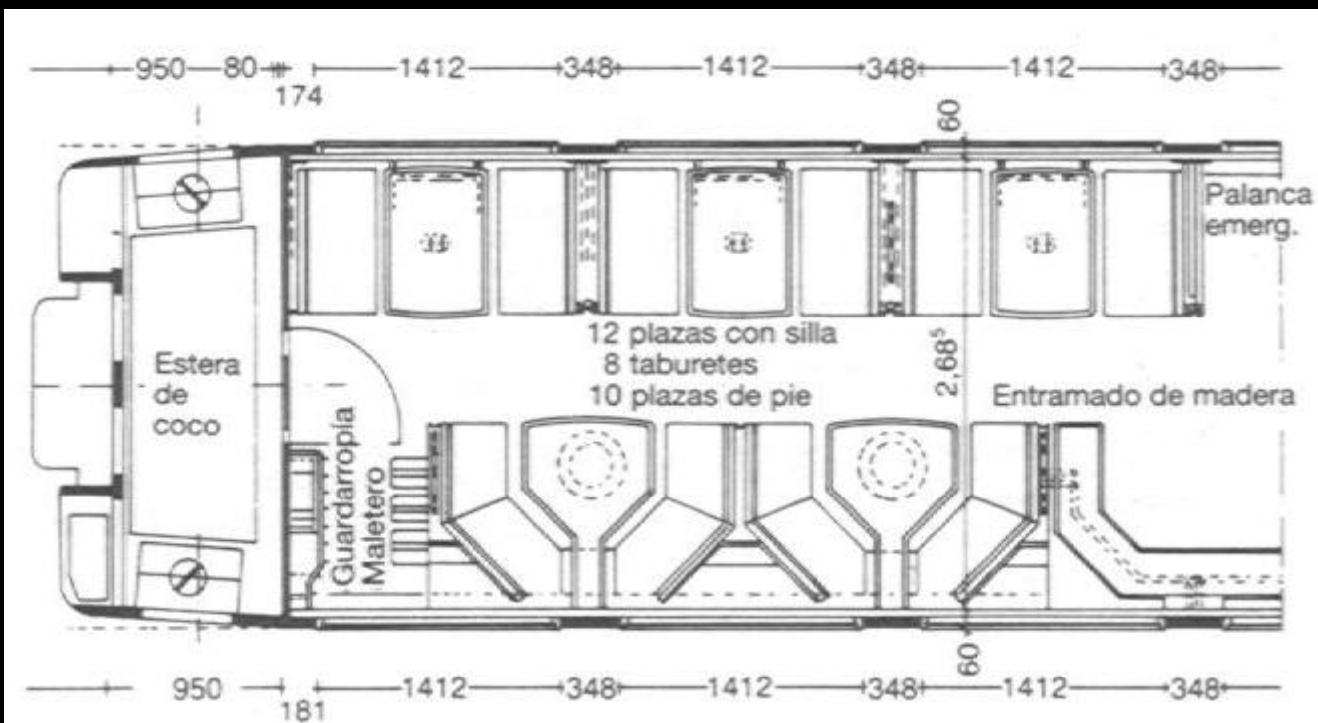
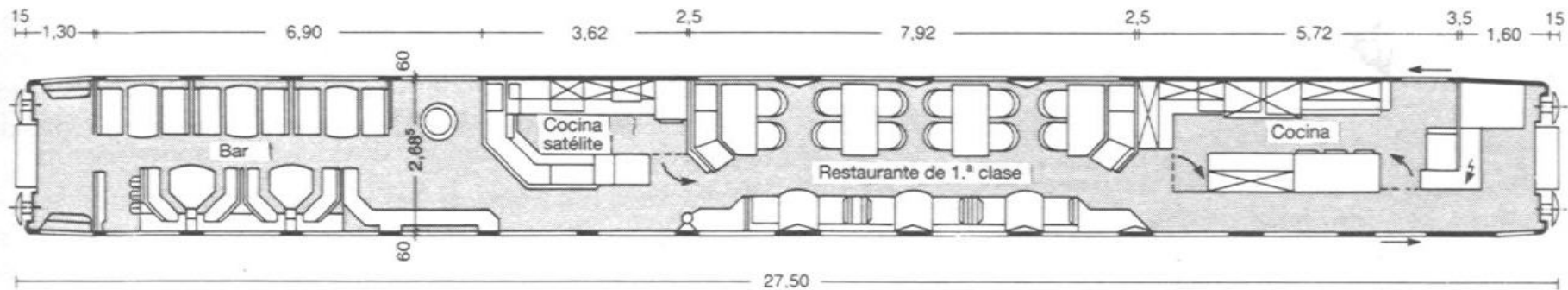


RUGBURN



RUGBURN is a design solution that cleverly uses recycled objects found in design firms. By rolling the tiles to different diameters you achieve different comfort densities. Ergonomics determines how to locate the rolled tiles. Tying the tiles together in "popcorn string" fashion with recycled cardboard tubes provides stability needed for comfort.





5 Planta, detalle del bar → 3

Otros factores del confort

- Climatización natural o artificial
- Ventilación
- Limpieza
- Sistemas de emergencia
- Seguridad industrial
- Ruido ambiental y externo
- Aislamiento térmico



Referentes

Diferenciación
espacial



BEEHIVE



© designed by Dirk Wynants, 2006

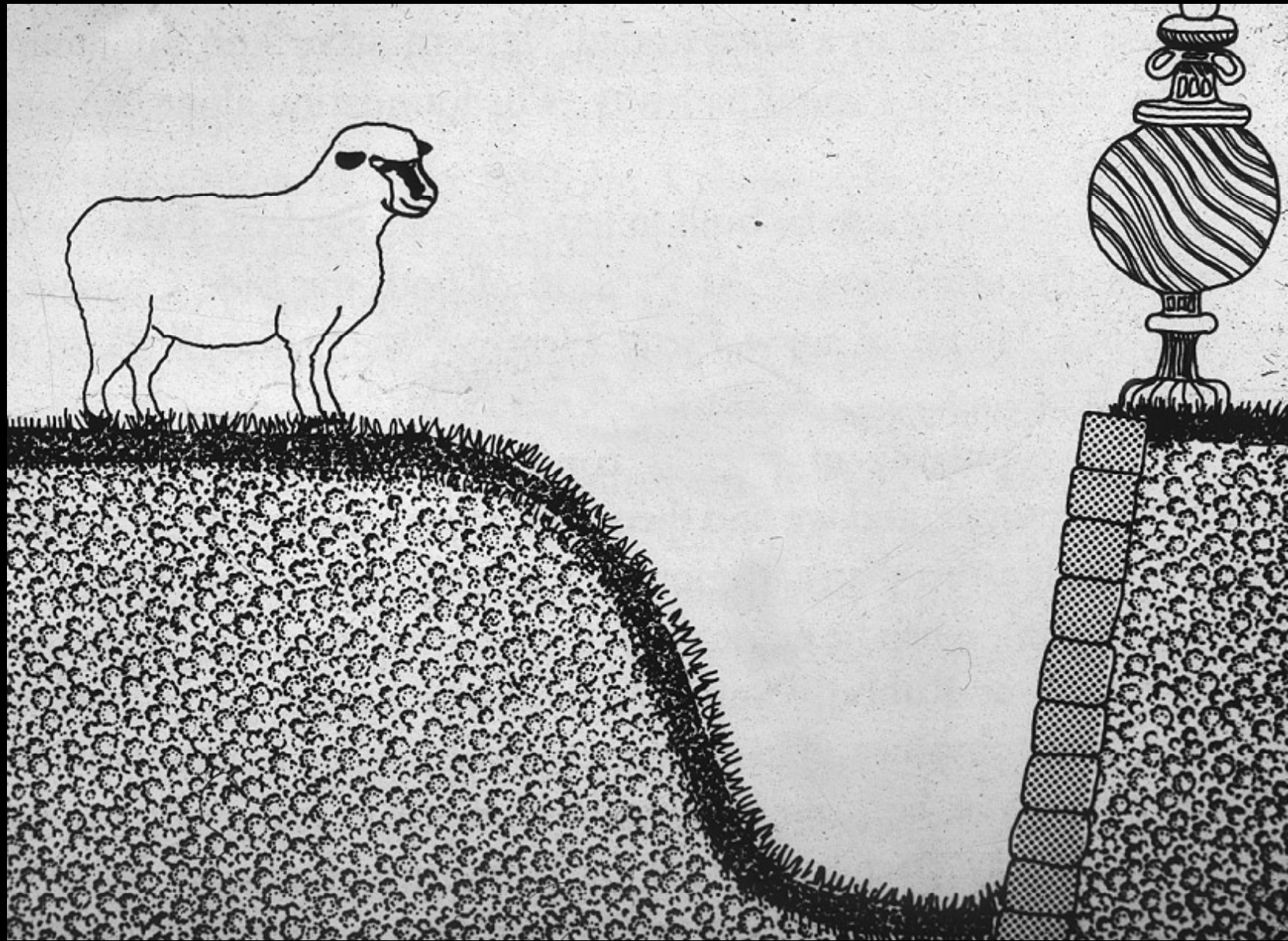












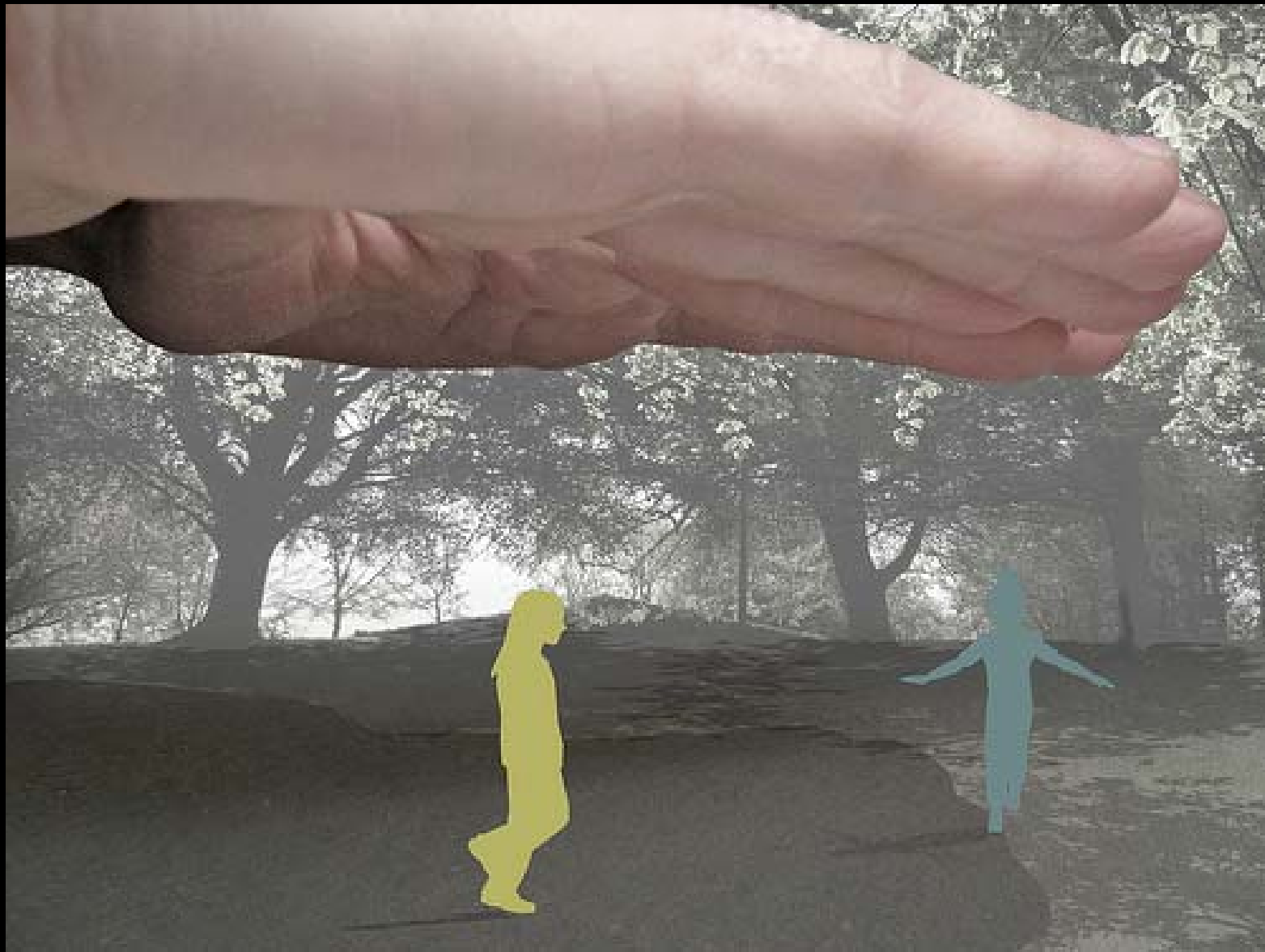
Referentes

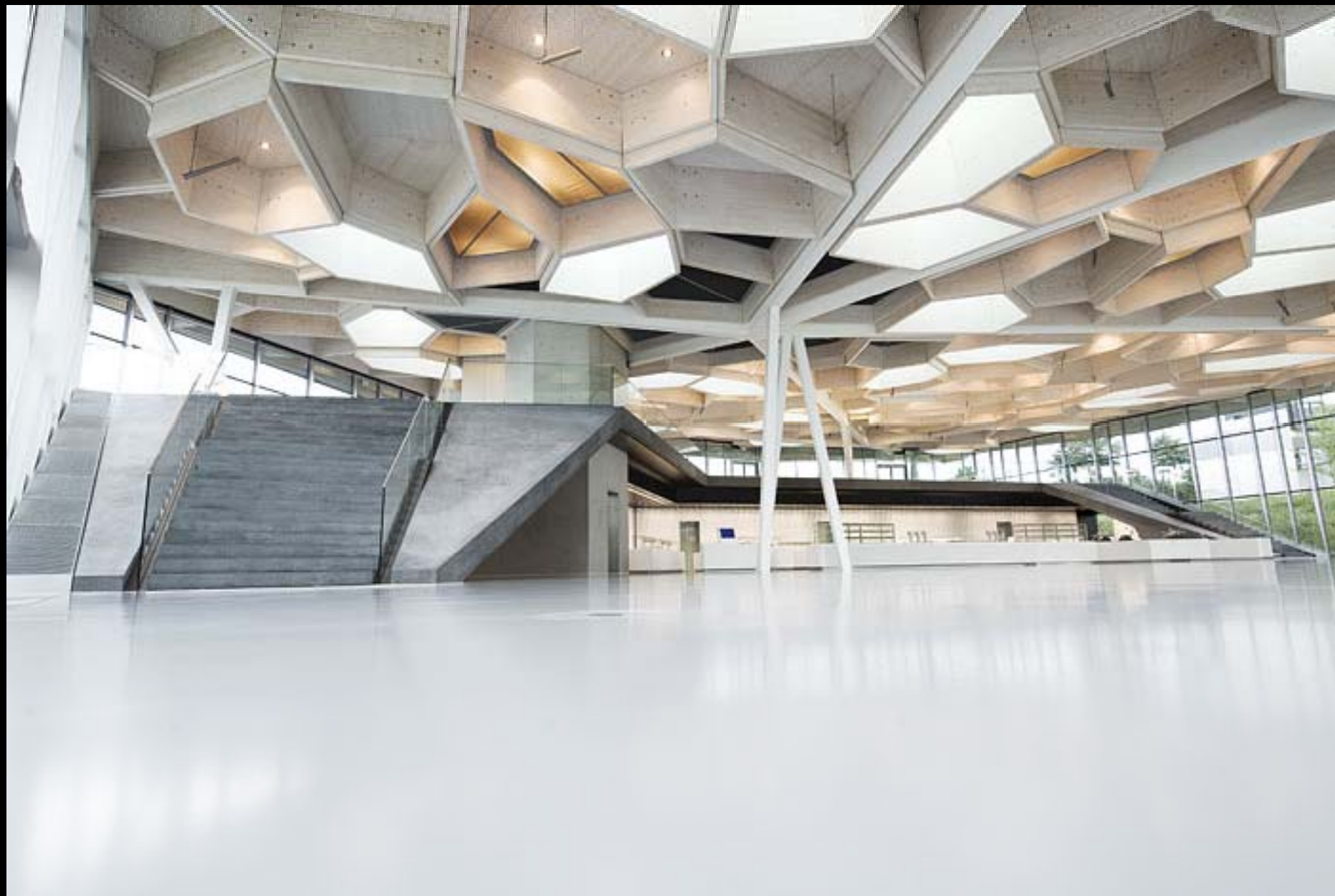
Íntimo /
público



















Otros referentes











Lo que completa el diseño...

- Textura
- Luz
- Sonido
- Circulación
- Carácter, idea, noción, concepto



SIMPLICITY
IS THE KEY TO
SUCCESSFUL LIVING

- Gracias...